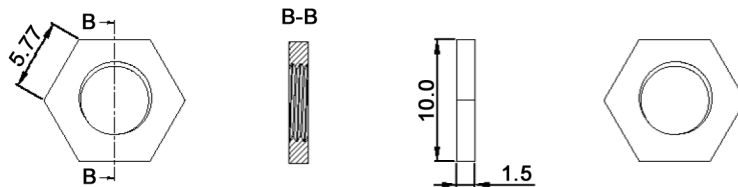


NUT
M6x0.75



Material: neoprene (CR), black, hardness: 60 +/-5 shore A
Nut: brass



Tolerances:			Date	Name	<h1>ET 102</h1>	<h2>30 28 44</h2>	Page	
0-10mm	+/- 0.10mm	40-50mm	+/- 0.30mm	04/13			dr	1/1
10-20mm	+/- 0.15mm	50-60mm	+/- 0.35mm					
20-30mm	+/- 0.20mm	60 and above	+/- 0.8%					
30-40mm	+/- 0.25mm							
Modifications			Date	Name	knitter-switch			